



YONSEI
UNIVERSITY DAIRY

Yonsei University Dairy

April 2021

Contents

연세우유,
한 컵의 우유로
미래를 만듭니다.

1962년 젖소 10두로 시작해 50여년 전통의 글로벌 유가공 업체로 성장한 연세우유.

이에 멈추지 않고 연세우유는 연세대학교 전문 교수진들의 지속적인 연구개발과 전용목장·공장의 철저한 생산관리를 통해 더욱 신선하고 건강한 우유를 만들기 위해 노력하고 있습니다. 소비자들에게는 고품질의 제품으로 건강을, 수익금 기부를 통한 대학 지원 사업으로 인재양성을, 연세우유가 우유 한 컵으로 만들어가는 건강한 미래입니다.

01

I. Yonsei University

02

II. Yonsei University Dairy

- Organization
 - Sales Volume
 - Factory & Lab
 - Sales
 - Global Sales
 - Home shopping
- Certificate
- Award
- Products

I. Yonsei University

1 Yonsei University

Where truth and freedom abound

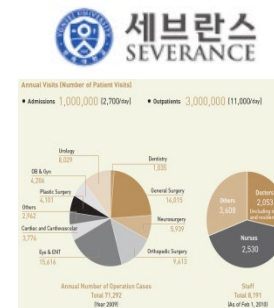
- The oldest university in Korea, Yonsei was established in 1885 by Christian missionaries. It has since then emerged as the nation's top private university.
- Seeking to find our place in the spectrum of civilizational transition, Yonsei will lead the next 100 years and write a new history. (Location : Shinchon, Wonju, Songdo)



2 Severance Hospital

With the love of God, free humankind from disease and suffering

- The first western-style medical institution was founded in Korea by Dr. Horace N. Allen in 1885. Based on a century and more of devotion and trust, Yonsei University Health System seeks to grow from its current status as a Northeast Asian medical hub into a fully global medical center. (Location : Shinchon, Gangnam, Wonju, Yongin)



II. Yonsei University Dairy

1 History of Yonsei University

Early Years

Yonsei Dairy began in 1962 with 10 dairy cows and has grown over 50 years to become an international dairy company.

Progressive Years

We are set to continue its efforts into the next 20 and beyond.

Leaders of the 21st century

Renowned professors have formed a Food Science Committee and developed innovative products by professional consultation.

1885~1978

1978. 3 : Switching over a place of practice affiliated to the Agriculture Development Corporation to the private corporation of dairy products

1971. 7 : Starting sales of Yonsei Milk in the market

1962. 6 : 10 Milk Cows donated by USA Happer Project

1979~1999

1997. 5 : YSD-JUMP 2001 a long-term strategy of management

1994. 5 : Exceed to produce and sell 200 metric ton milk daily

1993. 6 : Launched Asan Factory

1990. 8 : Yonsei Milk Company was founded

2000~2018

2017. 12 : Wins \$1M export Tower award (korea international trade association)

2017. 5 : The 55th anniversary of the foundation

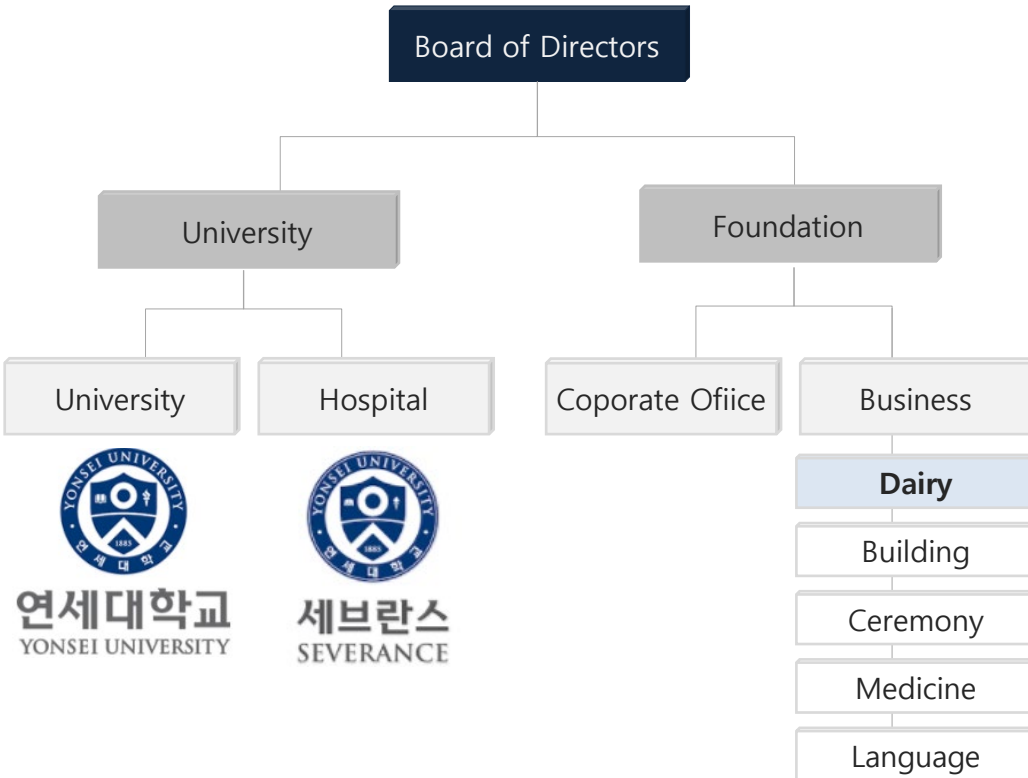
2016. 5 : Make an long-term strategic partnership with Inner mongolia Yili group

2013. 10 : The grand prized of "brand of the year 2013 Korea" special award

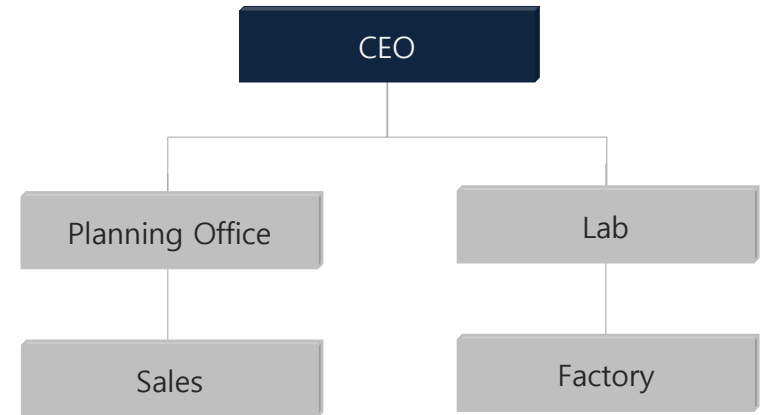
II. Yonsei University Dairy

1 Organization

YONSEI UNIVERSITY



YONSEI UNIVERSITY DAIRY



Total 202 employee			
Planning Office	Lab	Factory	Sales
17	22	120	46

II. Yonsei University Dairy

1 Sales Volume

(Million USD)

Category	Volume
National Brand	160
OEM, Others	26
Feed	5.4
Total	191.4

2 Sales in food delivery market

(Million USD)

Category	Volume	MS(%)
Yonsei	79	21.2%
Namyang	77	20.7%
konkuk	51	13.7%
Maeil	43	11.5%
Pasteur	24	6.4%
Denmark	16	4.3%
Ildong	8	2.1%
Others	75	20.1%
Total	373	100.0%

II. Yonsei University Dairy

1 Factory & Lab



General Information

Size

- ▶ Area : 64,207m²
- ▶ Building area : 17,522m²

Daily Amount of Milk Collection 210Ton

- ▶ Cooperative farm : 175tons
- ▶ Federation of Livestock Cooperative : 35tons

Daily Capacity

- ▶ Milk : 300tons
- ▶ Fermented Milk : 400,000ea
- ▶ Aseptic beverage : 140ton

II. Yonsei University Dairy

1 Global Sales



Tower of Export for
10 Million USD

No. 1
among the imported cold
storage milk in China



We have expanded our business into global markets, providing products to more than 20 countries. Also, our products earned a great reputation from the respective local markets. We always strive to find better products and services that meet rising consumer's expectations.

II. Yonsei University Dairy

2 Products In Market



Channel	SSG, CJ, GS, NS, Lotte
Number of Broadcasting	45times
Total Sales Volume	1.3 million USD (from Nov 2017)

II. Yonsei University Dairy

1 Certificate



Certificate KR1502427

The Food Safety Management System of
YONSEI UNIVERSITY DAIRY
829, Eumdong-ro, Eumdong-myeon, Asan-si, Chungcheongnam-do, Korea
has been assessed and certified by the requirements of

**FOOD SAFETY SYSTEM
CERTIFICATION 22000**

Food Safety System Certification is based on the food safety system including ISO 22000:2006, ISO/TS 22002-1 and additional FSSC 22000 requirements.

For the following activities:
Manufacture of Milk, Fermented milk and Soybean milk drink and fruit juice contained beverages and Soybean milk concentrates.
[Food Sector: Dairy products and Stable product and Beverages, Ready to Drink (fruit juice contained beverage, soybean milk drink) and Vegetable perishable product (chilled soybean milk concentrates)]

This certificate is issued on the basis of the FSSC 22000 certification scheme, version 2.2, published on 26 February 2015. The certification system includes an external audit of the food safety management system and a minimum annual verification of the FSSC 22000 and additional requirements as listed in the scheme and the ISO/TS 22002-1.

This certificate is valid from 15 May 2015 until 15 May 2018 and remains valid subject to satisfactory surveillance audits.
Date of Certification decision: 15 May 2015
Re-certification audit due before 24 March 2018
Issue 1. Certified since 15 May 2015

Authorized by: 

Subsidiary Accredited Office Manager
SGS United Kingdom Ltd. Systems & Services Certification
Riverside Business Park, Elmstead Hall, Chelmsford, CM10 3BN, UK
T +44 (0)1273 250488 F +44 (0)1273 250460 www.sgs.com

SGS FSSC 22000 04 01-4
Page 1 of 1

ISO 22000



Certificate KR1502387

The management system of
YONSEI UNIVERSITY DAIRY
829, Eumdong-ro, Eumdong-myeon, Asan-si,
Chungcheongnam-do, Korea
50, Yonsei-ro, Seodaejeon-gu, Seoul, Korea
has been assessed and certified as meeting the requirements of

ISO 9001:2008

For the following activities:
The Design, Development and Manufacture of Milk, Fermented milk and Soybean milk and fruit beverage.

Further certifications regarding the scope of this certificate and the applicability of ISO 9001:2008 requirements may be obtained by consulting the organization.

This certificate is valid from 20 April 2015 until 19 April 2018 and remains valid subject to satisfactory surveillance audits.
Re-certification audit due before 25 March 2018
Issue 1. Certified since 20 April 2015

Authorized by: 

SGS United Kingdom Ltd. Systems & Services Certification
Riverside Business Park, Elmstead Hall, Chelmsford, CM10 3BN, UK
T +44 (0)1273 250488 F +44 (0)1273 250460 www.sgs.com

SGS ISO 9001 01-014
Page 1 of 1

ISO 9001



HACCP

CERTIFICATE OF
HACCP APPLIED ESTABLISHMENT

Certificate No. : 2004-36
Manager : KIM SUK-SOO (Birth Date : 1932/11/20)
Name of Est. : YONSEI UNIVERSITY DAIRY
829, EUMBONG-RO, EUMBONG-MYEON, ASAN-SI, CHUNGCHONG NAM-DO, KOREA
Scope of Subject Items : Soymilk

This is to certify that the above is designated as HACCP applied establishment in accordance with Article 48.3 of the Food Sanitation Act and Article 63.3 the Enforcement Rule of the Food Sanitation Act.

Issuing Date : September / 8 / 2015
HACCP Applied Date : September / 7 / 2004

Idye Young Oh
The Director of Korea Institute for Food Safety Management Accreditation

HACCP



CQC

乳制品危害分析与关键控制点
(HACCP) 体系认证证书

证书编号: 001HACCP1500197

兹证明
延世大学校延世牛乳
地址: 韩国忠清南道牙山市阴峰面阴峰路 829 号

建立的危害分析与关键控制点 (HACCP) 体系符合如下标准要求:
GB 12693-2010《食品安全国家标准 乳制品良好生产规范》
GB/T 27341-2009《危害分析与关键控制点(HACCP)体系食品生产企业通用要求》
GB/T 27142-2009《危害分析与关键控制点(HACCP)体系 乳制品生产企业要求》

通过认证的范围如下:
调制乳的生产

首次发证日期: 2015年5月22日 本次发证日期: 2015年7月13日 有效期至: 2018年7月12日

唯一查询网址: 本证书可通过国家认证认可监督管理委员会网站和全国认证企业信息公开平台向社会公开, 为社会各界提供查询和验证服务。网址: www.cnca.gov.cn
中国质量认证中心 认证企业信息公开平台: www.cqc.com.cn

 中国合格评定国家认可委员会
管理体系认证
MANAGEMENT SYSTEM
CNAS C001-M

Wang Kaijie
Signed by Wang Kaijie

中国质量认证中心
中国·北京·朝阳区亮马桥路19号B座 100079
http://www.cqc.com.cn

F 0052381 2015年度

CHINA HACCP

II. Yonsei University Dairy

2 Award



Brand Customer
Loyalty Award 2017



Korea Brand Loyalty
Leader 2017



Tower of Export

II. Yonsei University Dairy

2

Milk

Carton Pack



Bottle Pack



Aseptic Pack



II. Yonsei University Dairy

Soy Milk

Aseptic Pack



Pouch Pack Bottle Pack



II. Yonsei University Dairy

3 Beverage & Fermented Milk

Fermented Milk



Beverage



Kids Jelly



Thank you